



HOMESTEAD COLLECTION

# The Barclay

3 - 4 BEDROOMS • 2.5 BATHS • 2,324+ SQ. FT. • 2 - 3 CAR GARAGE



Craftsman



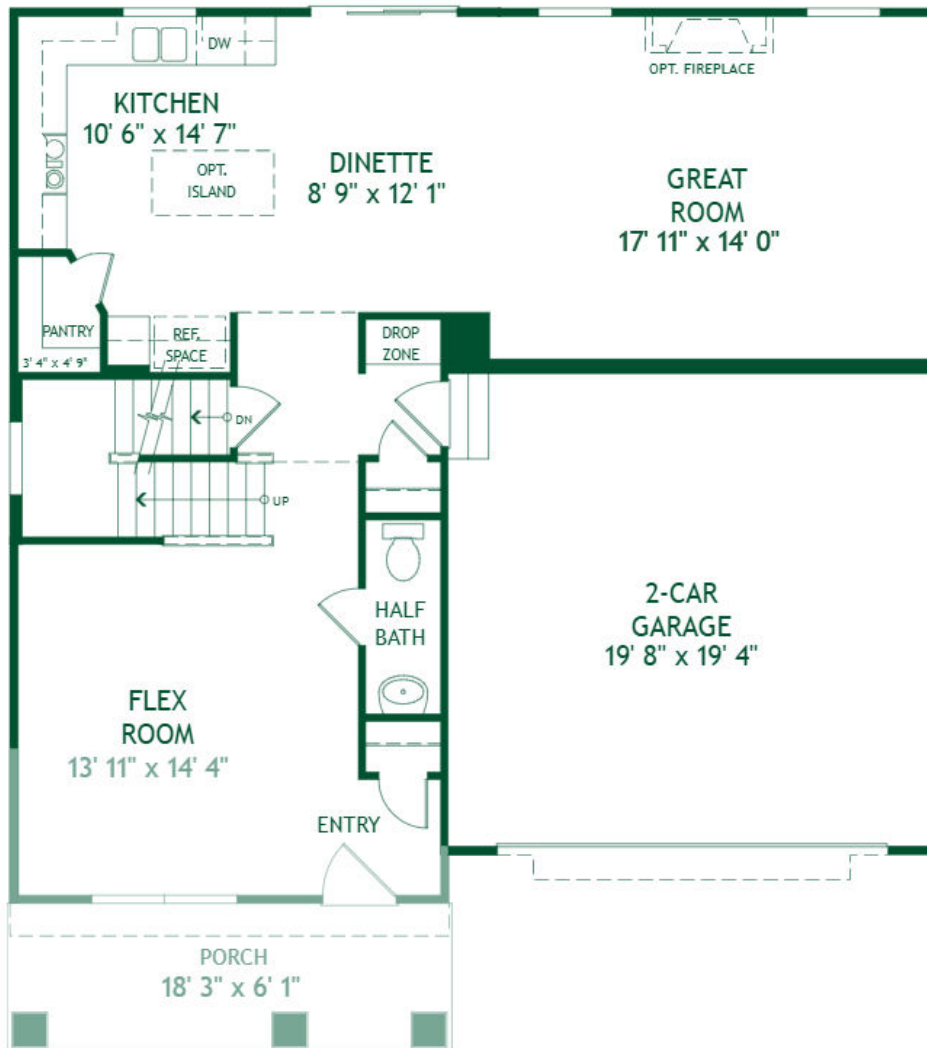
# The Barclay

**Floor Plan Features:**

- 3 - 4 Bedrooms
- 2.5 Baths
- 2,324+ sq. ft.
- 2 - 3 Car Garage

**Level 1 Options:**

- Fireplace, Den, Morning Room, Optional Island, 2FT, 4FT Great Room Extension, 2FT, 4FT, 6FT Garage Extension, 3 Car Garage



CRAFTSMAN  
FIRST FLOOR - BASE PLAN

For our Interactive Floor Plan, please visit: <https://rockfordhomes.com/new-home-designs/barclay>

*Copyright 2026. Plans, specifications, features, square footages, room dimensions, pricing, and other elements are subject to change without notice or obligation. Elevations may show options that are not included in base pricing. Basement level options and configurations available upon request. All images are artist's conception. Dimensions are estimates based on conceptual architectural plans.*



HOMESTEAD COLLECTION

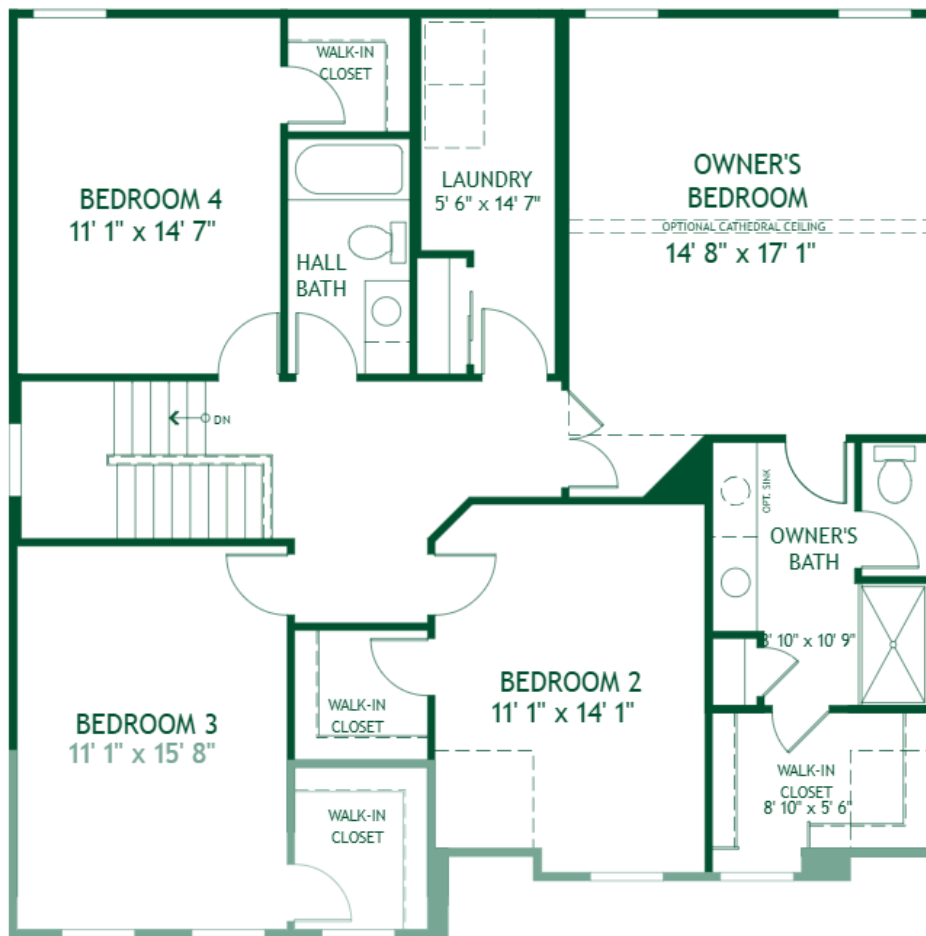
# The Barclay

**Floor Plan Features:**

- 3 - 4 Bedrooms
- 2.5 Baths
- 2,324+ sq. ft.
- 2 - 3 Car Garage

**Level 2 Options:**

Loft (In Lieu of Bedroom 4), Larger Hall Bath, Deluxe Owners Bath with Soaking Tub



CRAFTSMAN  
SECOND FLOOR - BASE PLAN

For our Interactive Floor Plan, please visit: <https://rockfordhomes.com/new-home-designs/barclay>

*Copyright 2026. Plans, specifications, features, square footages, room dimensions, pricing, and other elements are subject to change without notice or obligation. Elevations may show options that are not included in base pricing. Basement level options and configurations available upon request. All images are artist's conception. Dimensions are estimates based on conceptual architectural plans.*



HOMESTEAD COLLECTION

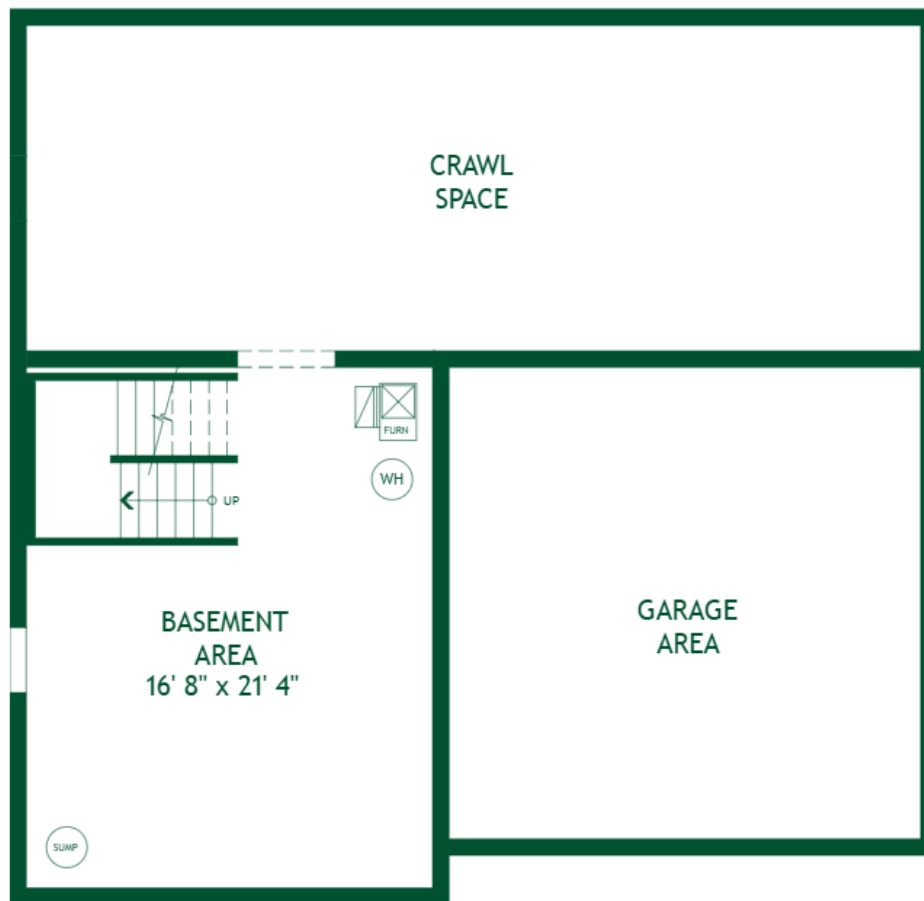
# The Barclay

**Floor Plan Features:**

- 3 - 4 Bedrooms
- 2.5 Baths
- 2,324+ sq. ft.
- 2 - 3 Car Garage

**Basement Level Options:**

Three Quarter Basement, Full Basement



CRAFTSMAN  
STANDARD BASEMENT - BASE PLAN

For our Interactive Floor Plan, please visit: <https://rockfordhomes.com/new-home-designs/barclay>



HOMESTEAD COLLECTION

# The Barclay

3 - 4 BEDROOMS • 2.5 BATHS • 2,324+ SQ. FT. • 2 - 3 CAR GARAGE

## EXTERIOR DESIGNS



American Classic



Colonial Revival



Craftsman



American Farmhouse

**Rockford Homes  
Corporate Office**  
999 Polaris Parkway - Suite 200  
Columbus, OH 43240



Scan this **QR code** to view  
our Interactive Floor Plan  
**RockfordHomes.com**  
**614-785-0015**

