



**9544 Alnwick Loop**  
Plain City, OH 43064



\*Subject to prior sale or price change at any time without notice. RH-119.2026

## The Providence

at Mitchell Highlands

Jonathan Alder Schools

- ✓ **Home Type:** First Floor Owner's
- ✓ **Sqr. Footage:** 2,847
- ✓ **Bedrooms:** 4
- ✓ **Bathrooms:** 3.5
- ✓ **Garage:** 3 Car
- ✓ **Homesite #:** #39

**\$749,900** Was \$769,812

### Quality Upgrades Throughout

- ✓ **Deluxe Owner's Bath**
- ✓ **3-Car Garage**
- ✓ **Covered Lanai**
- ✓ **Walk-in Pantry**
- ✓ **Open Kitchen to Great Room and Dinette**
- ✓ **9' Poured Wall Full Basement**



For More Information Contact Our New Home Consultant  
**(614) 665-8262 | [OSC@rockfordhomes.com](mailto:OSC@rockfordhomes.com)**





**Providence**

3 - 4 Bedrooms

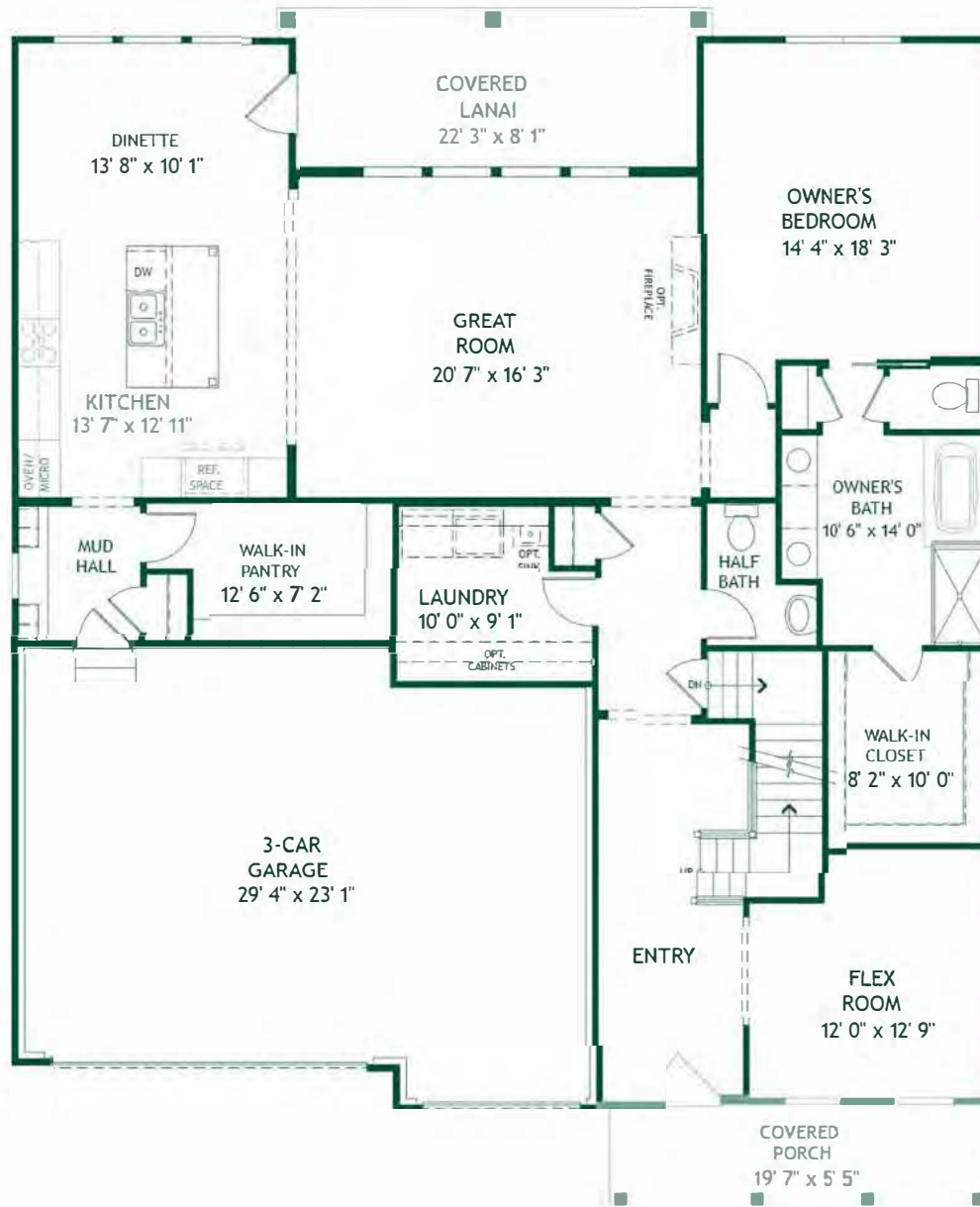
2.5 - 3.5 Baths

2,847 sq. ft

3 Car Garge

**Level 1 Options:**

Built In Kitchen, Covered Lanai, Optional Soaking Tub



AMERICAN FARMHOUSE  
FIRST FLOOR

Copyright 2025. Plans, specifications, features, square footages, room dimensions, pricing, and other elements are subject to change without notice or obligation. Elevations may show options that are not included in base pricing. Basement level options and configurations available upon request. All images are artist's conception. Dimensions are estimates based on conceptual architectural plans.



**Providence**

3 - 4 Bedrooms

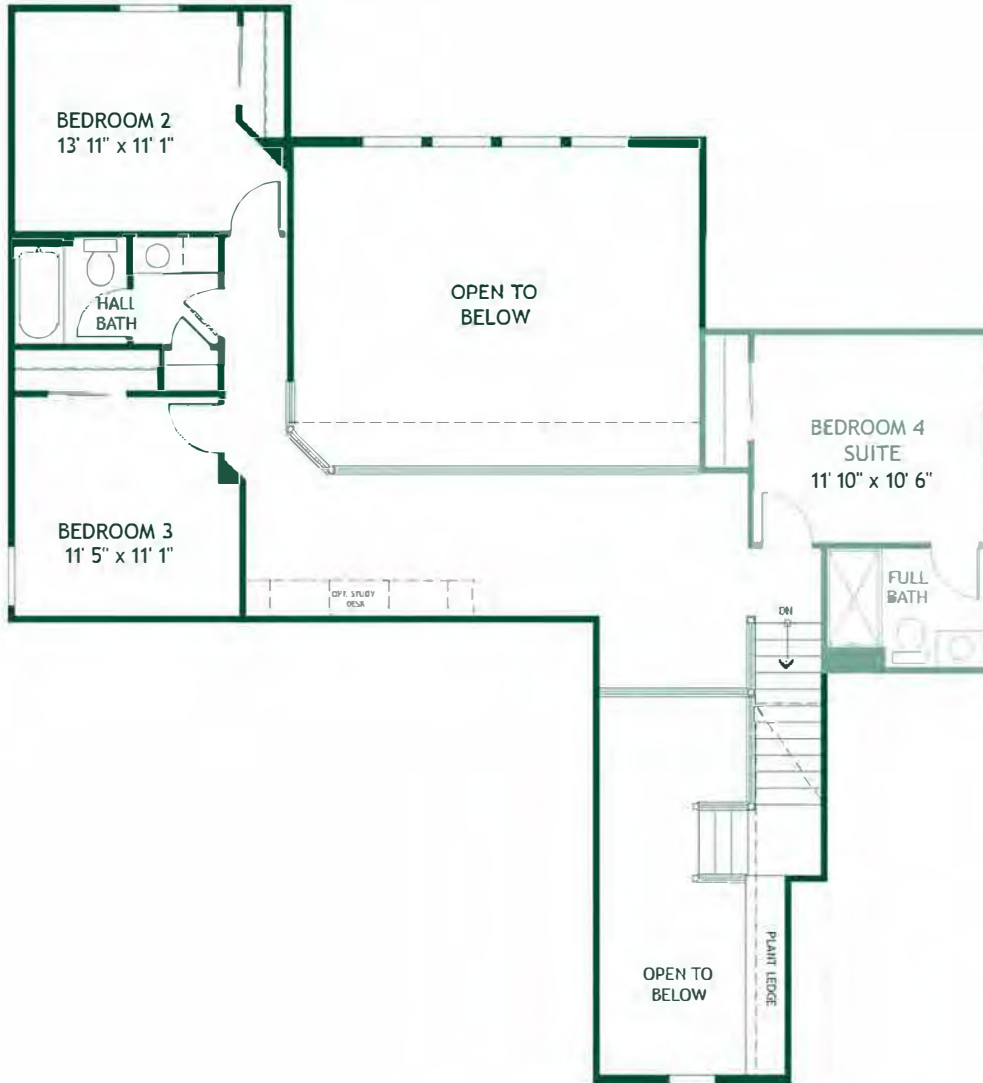
2.5 - 3.5 Baths

2,847 sq. ft

3 Car Garage

**Level 2 Options:**

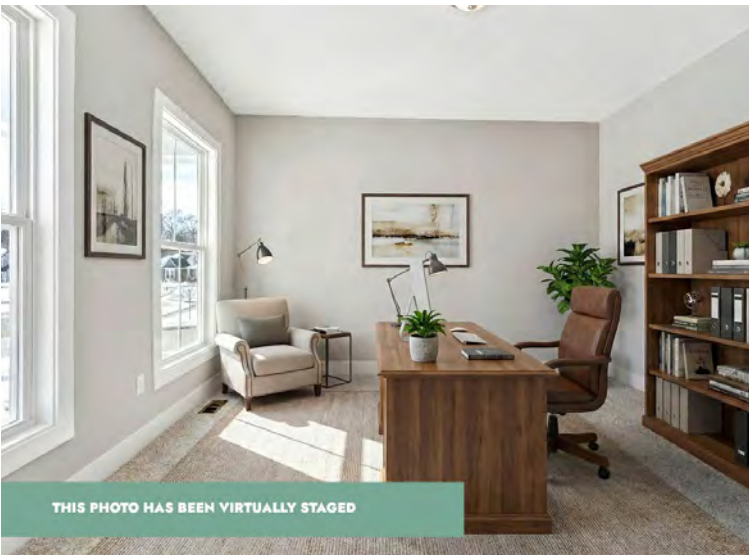
Bedroom 4 Suite



**AMERICAN FARMHOUSE  
SECOND FLOOR**

Copyright 2025. Plans, specifications, features, square footages, room dimensions, pricing, and other elements are subject to change without notice or obligation. Elevations may show options that are not included in base pricing. Basement level options and configurations available upon request. All images are artist's conception. Dimensions are estimates based on conceptual architectural plans.

# MH 39 - 9544 Alnwick Loop



**\*IMAGES HAVE BEEN VIRTUALLY STAGED**



