



7004 Aster Way
Plain City, OH 43064



*Subject to prior sale or price change at any time without notice. RH-1.19.2026

The Bradford

at Jerome Village Aster

Dublin City Schools

- ✓ **Home Type:** Two Story
- ✓ **Sqr. Footage:** 3,004
- ✓ **Bedrooms:** 5
- ✓ **Bathrooms:** 3
- ✓ **Garage:** 2 Car
- ✓ **Homesite #:** #2325

\$674,900 Was \$723,089

Quality Upgrades Throughout

- ✓ Spacious Gourmet Kitchen with Island
- ✓ Butler's Pantry to Dining Room
- ✓ Walk-in Pantry
- ✓ EVP Flooring throughout First Floor
- ✓ Guest Suite on the First Floor
- ✓ Two Story Great Room with Wall of Windows
- ✓ Fireplace
- ✓ Extended 2-car Garage
- ✓ Full Basement with Bath Rough-ins



For More Information Contact Our New Home Consultant
(614) 665-8262 | OSC@rockfordhomes.com





Bradford

3 - 5 Bedrooms

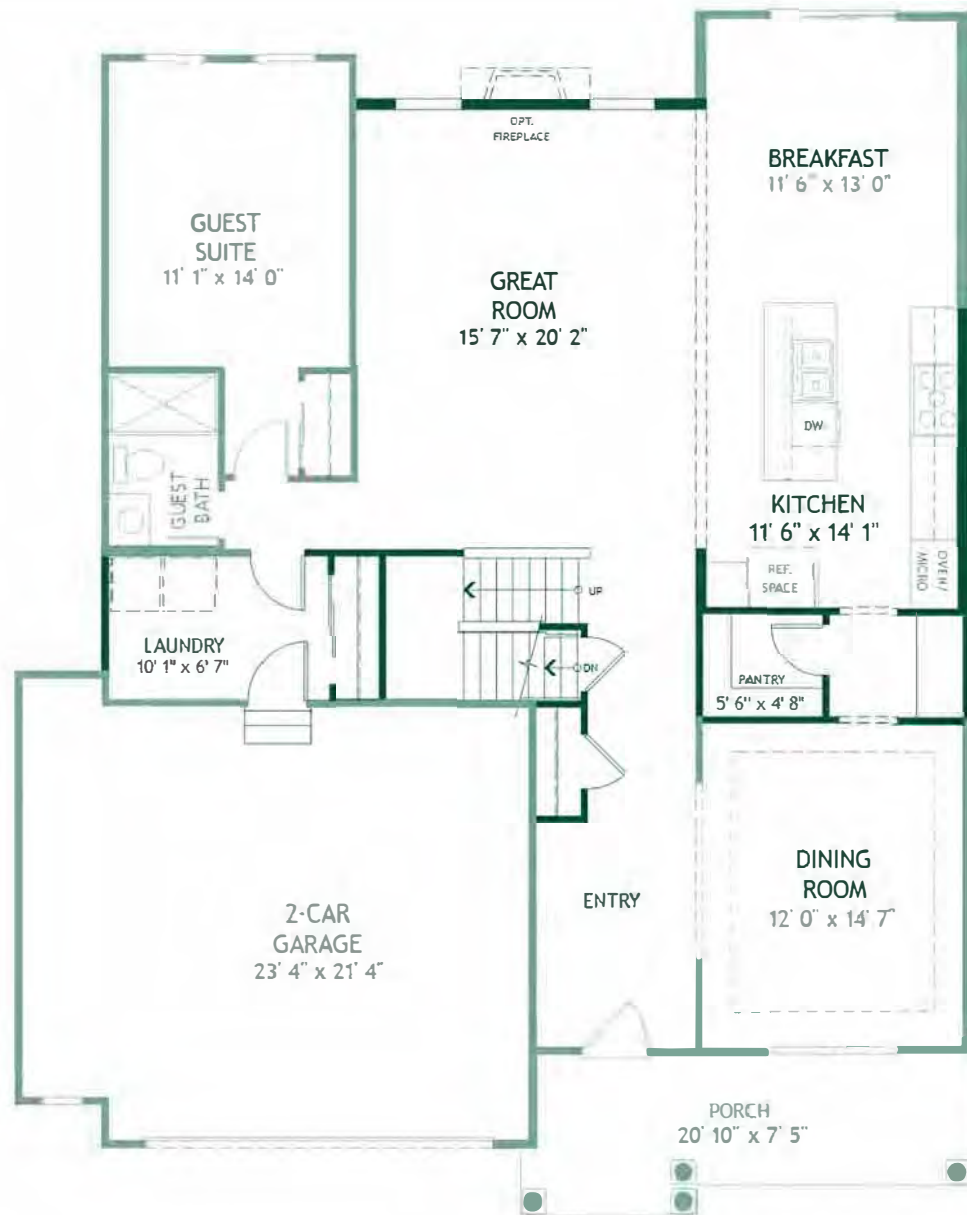
2.5 - 4 Baths

2,858 - 3,298 sq. ft

2 - 3 Car Garage

Level 1 Options:

4FT Breakfast Extension, 4FT 2 Car Garage Extension, 2FT Den Extension, Guest Suite, 2FT Guest Suite Extension...



COLONIAL REVIVAL
FIRST FLOOR

Copyright 2025. Plans, specifications, features, square footages, room dimensions, pricing, and other elements are subject to change without notice or obligation. Elevations may show options that are not included in base pricing. Basement level options and configurations available upon request. All images are artist's conception. Dimensions are estimates based on conceptual architectural plans.



Bradford

3 - 5 Bedrooms

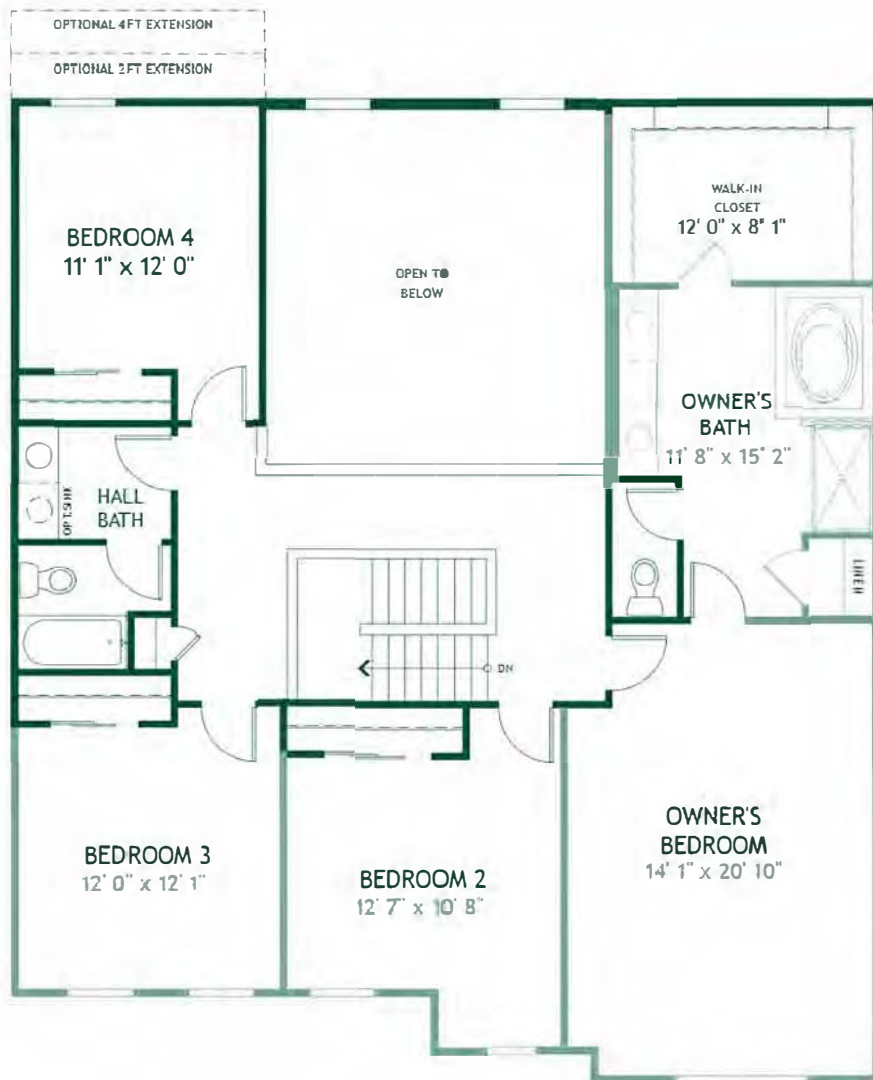
2.5 - 4 Baths

2,858 - 3,298 sq. ft

2 - 3 Car Garage

Level 2 Options:

Deluxe Owners Bath with Soaking Tub



COLONIAL REVIVAL
SECOND FLOOR

Copyright 2025. Plans, specifications, features, square footages, room dimensions, pricing, and other elements are subject to change without notice or obligation. Elevations may show options that are not included in base pricing. Basement level options and configurations available upon request. All images are artist's conception. Dimensions are estimates based on conceptual architectural plans.



Bradford

- 3 - 5 Bedrooms
- 2.5 - 4 Baths
- 2,858 - 3,298 sq. ft
- 2 - 3 Car Garage

Level 3 Options:

- Full Basement



COLONIAL REVIVAL
FULL BASEMENT

Copyright 2025. Plans, specifications, features, square footages, room dimensions, pricing, and other elements are subject to change without notice or obligation. Elevations may show options that are not included in base pricing. Basement level options and configurations available upon request. All images are artist's conception. Dimensions are estimates based on conceptual architectural plans.

JA 2325 - 7004 ASTER WAY





